

LISTENING

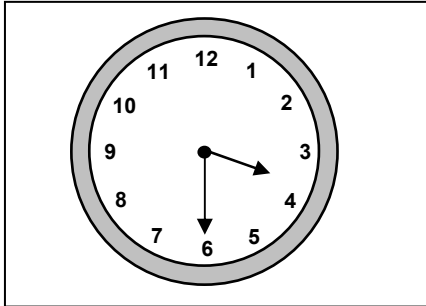
PART ONE

Questions 1 – 10

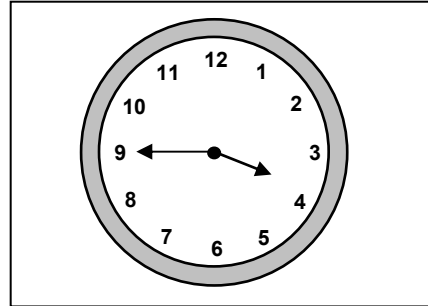
- You will hear 10 short recordings.
- For questions 1 – 10, circle **one** letter **A**, **B** or **C** for the correct answer.
- You will hear each recording **twice**.

1 When must the woman be at the airport to meet Mr Kimoto?

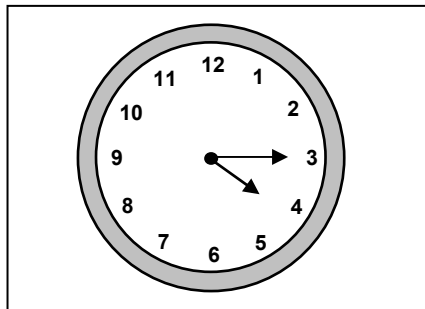
A



B

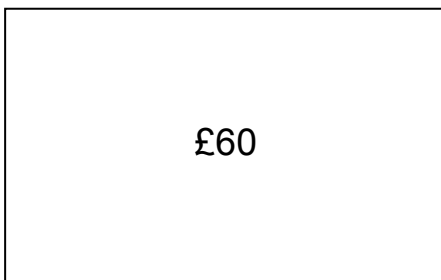


C



2 How much will it cost the woman to rent a car?

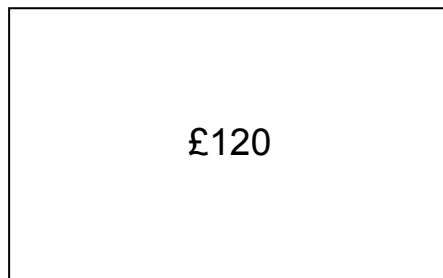
A



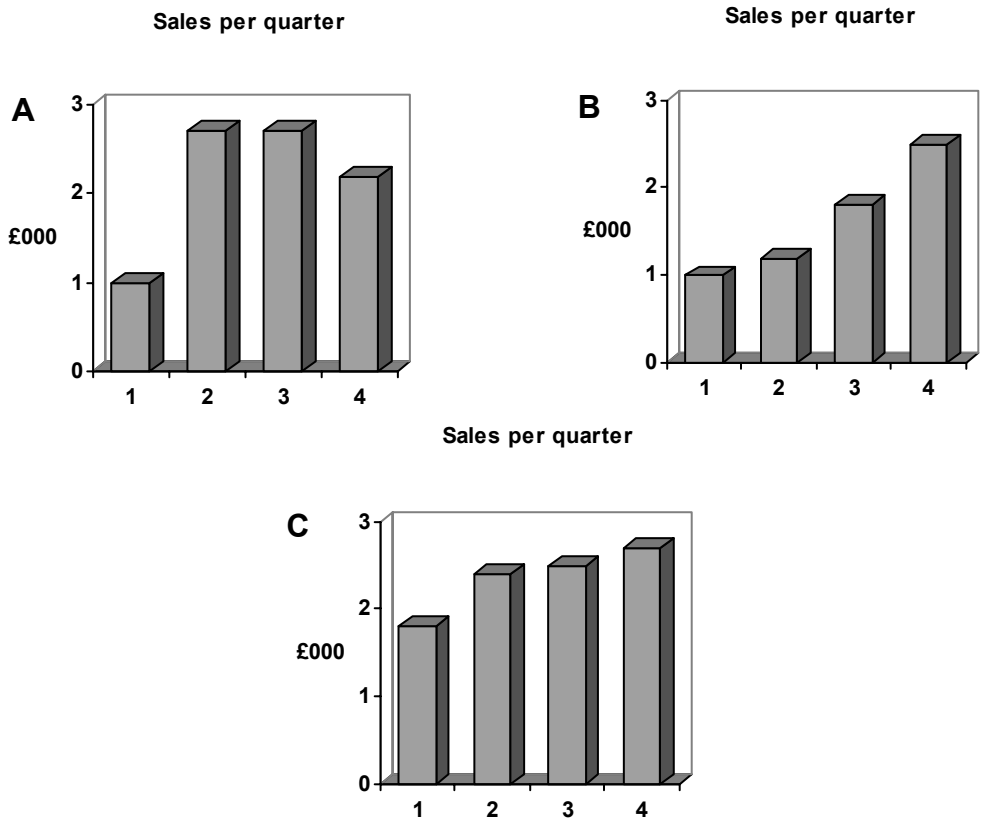
B



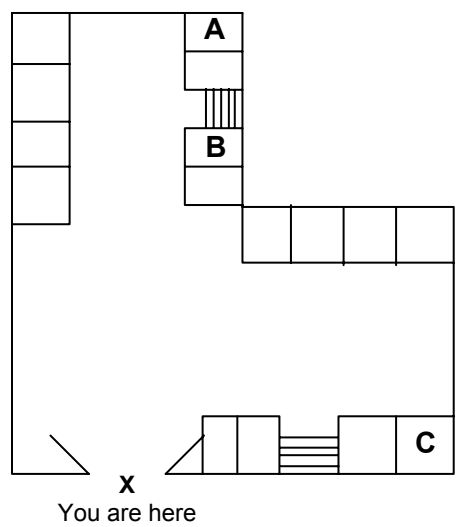
C



3 Which chart shows the company's sales?

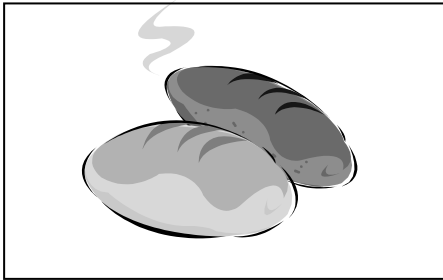


4 Which is Mr Fielding's office?

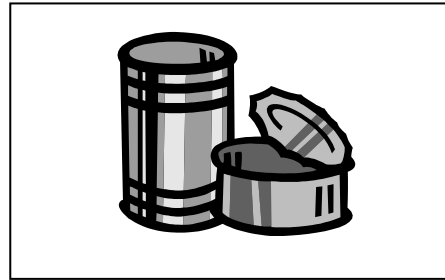


5 What does the company no longer manufacture?

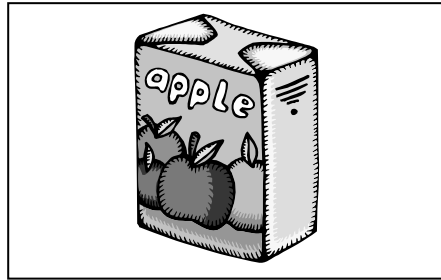
A



B



C



6 How many days' holiday has Bob got left?

A 2

B 5

C 10

7 In which month will they advertise for temporary workers?

A February

B April

C July

- 8** What has changed about the packaging?
- A** the size
 - B** the colour
 - C** the material
- 9** Why hasn't GBM fixed the machines yet?
- A** There were no replacement parts in stock.
 - B** The wrong replacement parts were delivered.
 - C** Replacement machines are required.
- 10** What should Peter Williams do?
- A** acknowledge the receipt of goods
 - B** advise the best method of despatch
 - C** confirm the details of an order